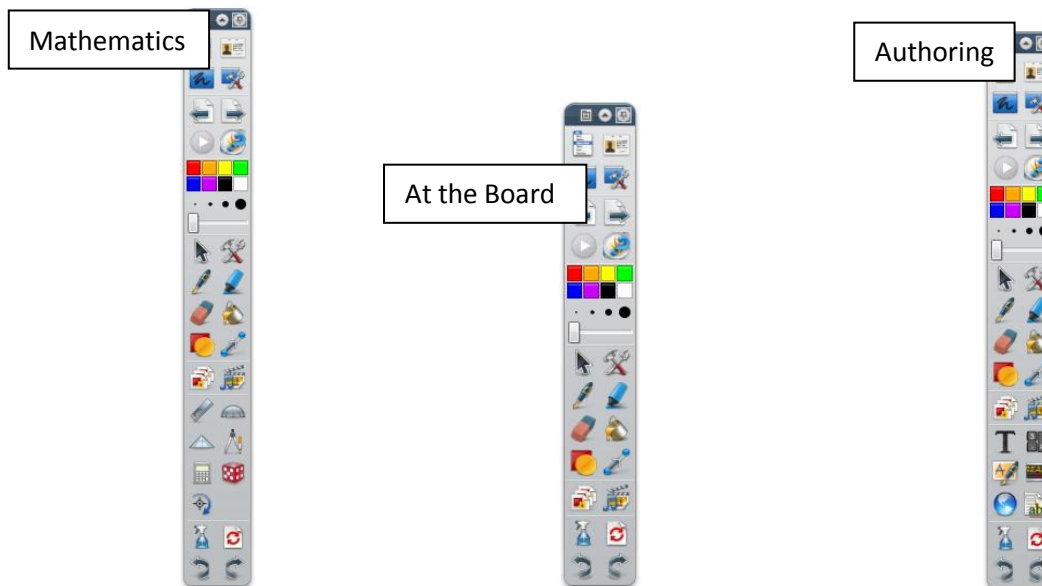


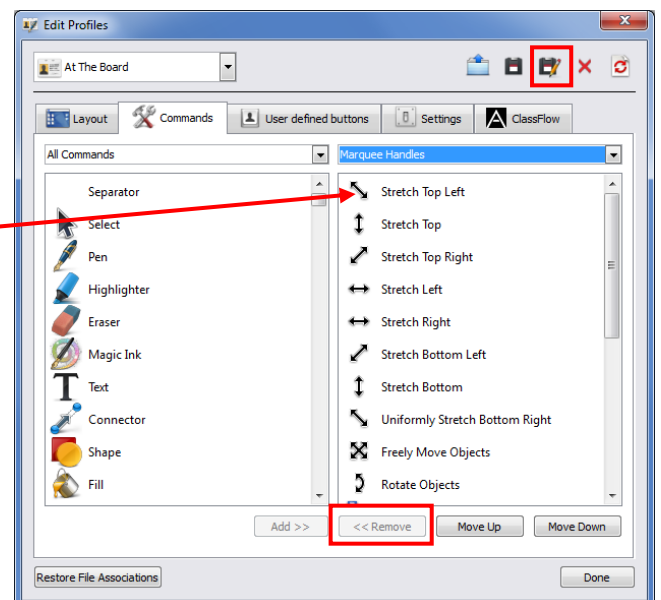
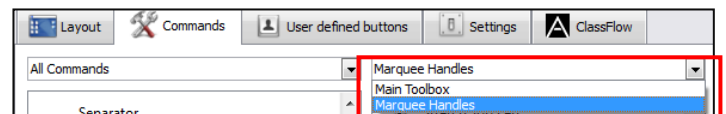
Creating and saving (Student) Profiles.

Profiles can be created and saved to allow easy transition between having different icons in the main toolbox for different subject areas/lessons. For instance there is already a 'mathematics' profile saved in the program which has all the maths tools in the main toolbox as individual icons. This saves the need to constantly be going through the 'tools' menu to get to the maths tools. To switch between the profile go to *View* → *Switch Profile* and select the desired profile. Some of the profiles already saved include:



Customize your own profile for having no marquee handles and saving it.

1. Go to *View* → *Customize*.
2. On the left hand side of the dialogue box that appears are all the commands you *could have* in the toolbox. On the right hand side are the commands that *are* in the toolbox.
3. Click on the down arrow next to *Main Toolbox*, and choose *Marquee Handles*.
4. To remove a command from the marquee handles/object icons; left click on the tool e.g. *stretch top left*.
5. Left click <<*Remove*.
6. Once all the tools desired are removed and in place. Left click on the *Save Profile As...* icon at the top right corner of the dialogue box.
7. Give your profile a name (student is a good one if you have taken away all the marquee handles) and hit save.
8. Click *Done* at the bottom of the dialogue box.
9. Go to *View* → *Switch Profile* and you will see the profile just saved as an option now in the drop down menu. Switch to Student when the students use the board.



Note: You can also simplify the main toolbox to the basics by using the same technique of removing unwanted icons so they are only left with tools such as pen, eraser and highlighter.